



**nokra**

# news

precision · speed · dynamics

FEB

2011

[www.nokra.de](http://www.nokra.de)

Editorial

## Welcome!

*Welcome to this first edition of "nokra-news". Following numerous requests from our customers and friends, we want to keep you up-to-date on the exciting developments at nokra and our mission of optical testing.*

*We plan to update you regularly on our achievements and developments. Please share nokra-news with your colleagues in the field, and feel free to request additional information on products or subjects of specific interest to you.*



Join us on our dynamic, innovative path into the future.

Michael Krauhausen  
Managing director  
nokra GmbH

## Forecast 2011

nokra is looking forward to 2011.

2010 was a good year for nokra, based on our order backlog we are planning for the current year a business increase of more than 10%. The economical downturn as well as the current recovery pressure our customers to constantly optimize their production process towards higher quality and efficiency. nokra products provide a significant contribution to those efforts. They also fulfill the ever increasing demand for complete documentation of the produced quality.

Anyone who wants compete globally cannot forego uncompromising quality in all stages of production. nokra products

and their applications are established in the industries: they supply and contribute to the economic success of our customers.

In 2010 we launched our international sales activities. Contracts from Europe and the U.S. have contributed to our good order situation. To build on those successes we founded our first international subsidiary earlier this year, nokra Inc (Chicago, USA). To back our commercial successes, we are also strengthening our interdisciplinary team of physicists, mechanical engineers, electrical engineers, mathematicians and computer scientists.

The trade fair CONTROL 2011 is going to take place in Stutt-

## News

+++ nokra GmbH is turning 20. This Summer nokra will celebrate 20 years of steady growth in all aspects of our business. +++

+++ Gratifying order: In December 2010 the company voestalpine Schienentechnik placed an order for a straightness measuring unit for rails. Voestalpine (Austria) is a successful international company with a variety of specialized plants that produce, process and develop high-quality steel products.+++

+++ At the end of 2010, the eighth measuring unit for in-line inspection of the generated bending contour of windscreens was delivered to the Saint Gobain plant in the Czech Republic. +++

+++ Priority service! Our service team grows, we welcome Mr. Kieselack to our team. +++



... a passion for precision.

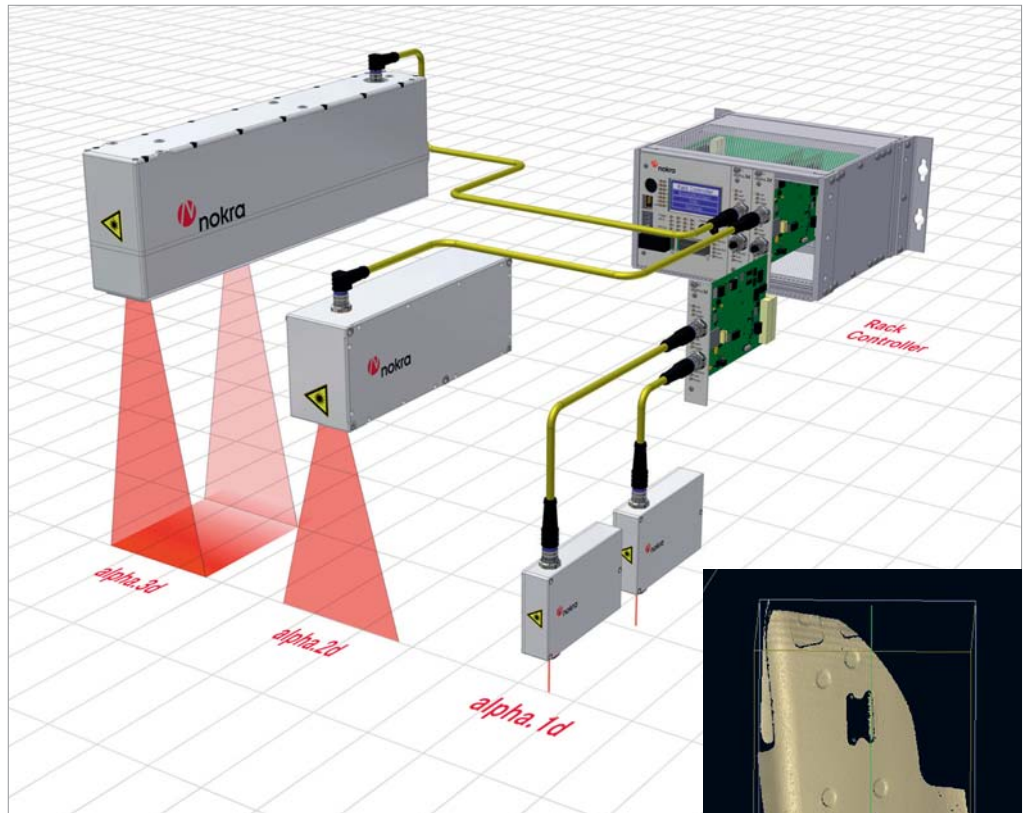
# The new generation of sensors in operation

At CONTROL 2010, we introduced our new generation of sensors for the first time in front of an audience. The new concept and the characteristic shape found a wide echo. By now, these sensors are widely used. The users are delighted. The alpha series has distinct advantages: although smaller in frame size, the sensors impress with improved dynamics and a higher measurement frequency.

A completely new product are the alpha.3d sensors that detect the three-dimensional topography of a stationary object in a measurement volume. The laser line moves across the object. Its position is determined with a high resolution position measurement system. Several alpha.3d sensors can be combined to determine the 3D topography of a larger object at different locations simultaneously. At the end of 2010, the first automated system for testing an axle subframe of a automobile with alpha.3D sensors was delivered.

For each measurement task, the right sensors are available:

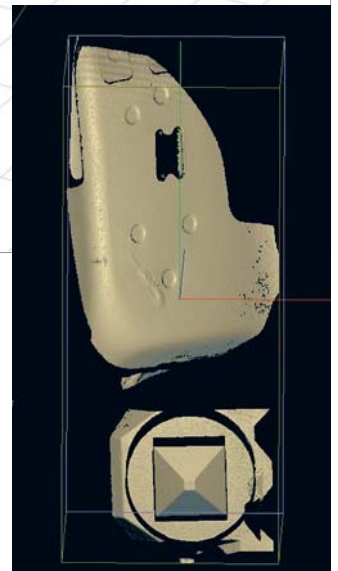
- alpha.1d** Fast, accurate distance measurement
- alpha.2d** Simultaneous measurement profile along a laser line



**alpha.3d** Measurement of complete three-dimensional topographies

nokra sensors have been developed for direct use in the production line. A significant potential for monitoring, control, and optimization of their manufacturing process is made available to users. This results in an

increase in productivity and efficiency in mass production. nokra sensors are especially suited for automatic testing of geometric features of products in the automotive and steel industries. Test objects are components of vehicles such as camshafts and crankshafts, and rolled products in the metal processing industry.



+++ You are welcome to request a brochure in English or German language about the new generation of sensors from us. +++

